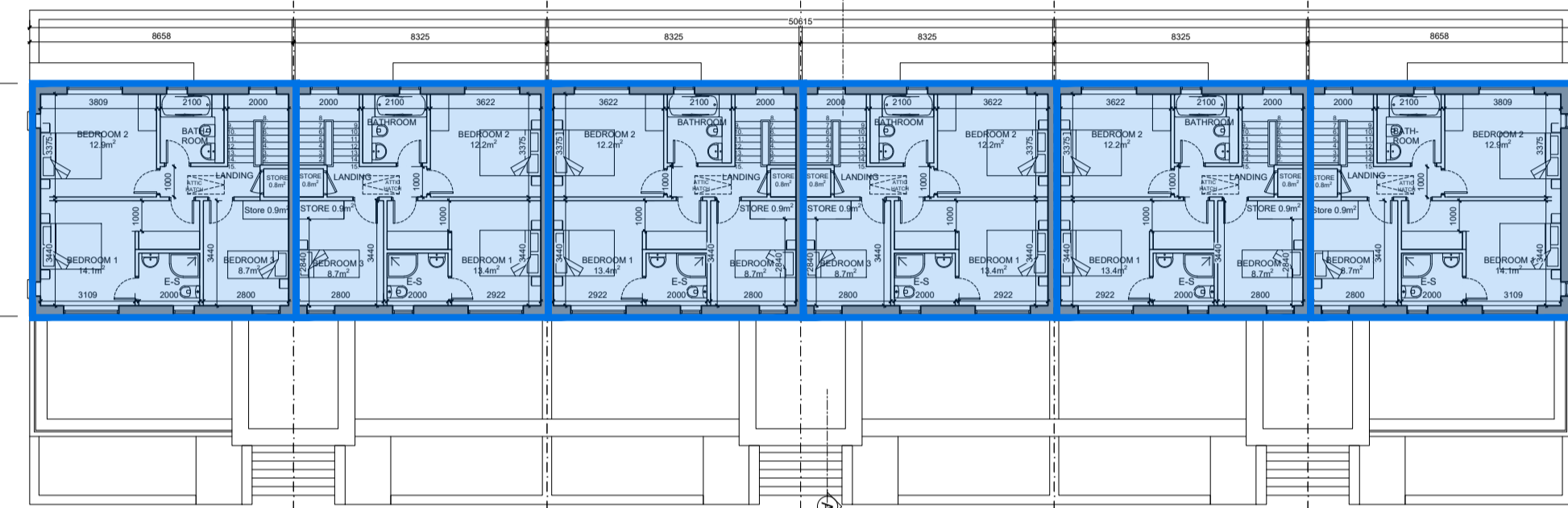
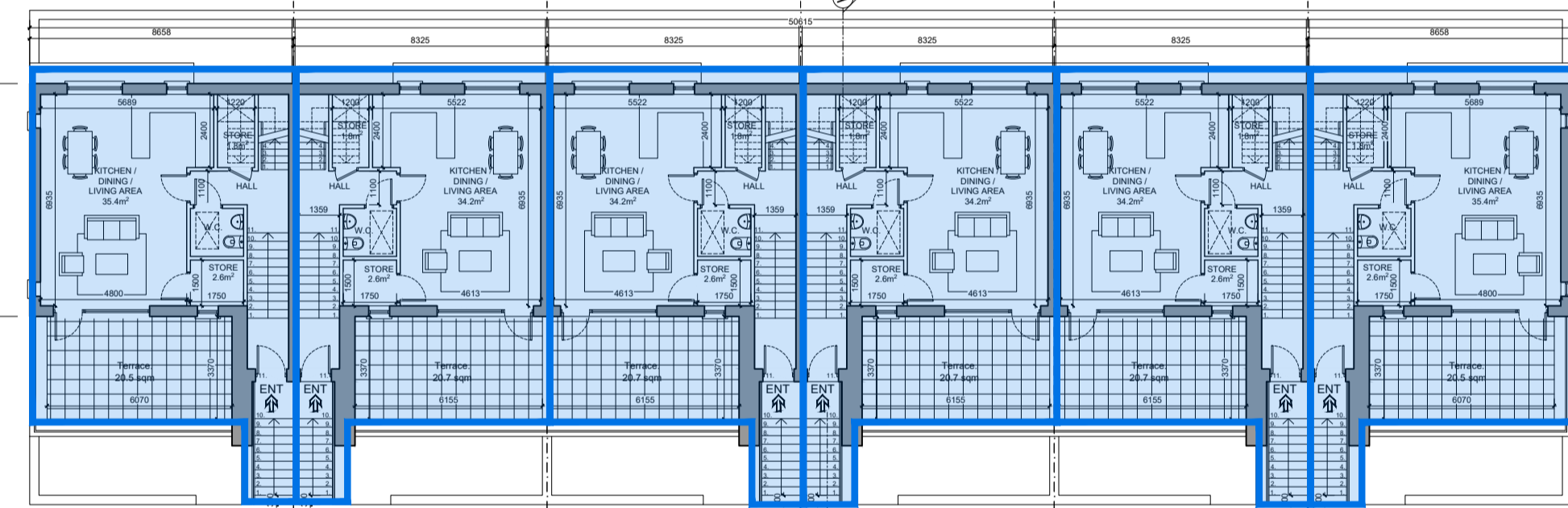


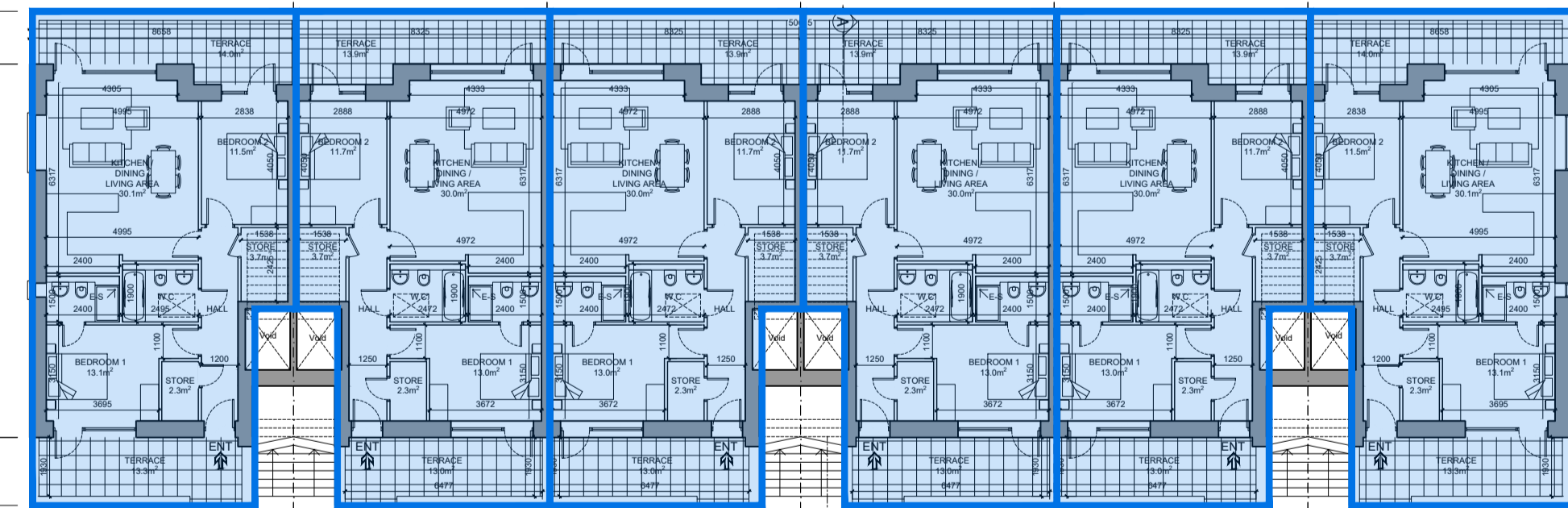
ATTIC PLAN - Unit Types: B2-B3-B3-B3-B3-B2 (minimum usable storage area per unit as indicated)



N.125 DUPLEX B2 SECOND FLOOR PLAN 2F Area = 56.3 m<sup>2</sup> (O/A Area 115.8 m<sup>2</sup>)  
 N.126 DUPLEX B3 SECOND FLOOR PLAN 2F Area = 55.2 m<sup>2</sup> (O/A Area 113.2 m<sup>2</sup>)  
 N.127 DUPLEX B3 SECOND FLOOR PLAN 2F Area = 55.2 m<sup>2</sup> (O/A Area 113.2 m<sup>2</sup>)  
 N.128 DUPLEX B3 SECOND FLOOR PLAN 2F Area = 55.2 m<sup>2</sup> (O/A Area 113.2 m<sup>2</sup>)  
 N.129 DUPLEX B3 SECOND FLOOR PLAN 2F Area = 55.2 m<sup>2</sup> (O/A Area 113.2 m<sup>2</sup>)  
 N.130 DUPLEX B2 SECOND FLOOR PLAN 2F Area = 56.3 m<sup>2</sup> (O/A Area 115.8 m<sup>2</sup>)

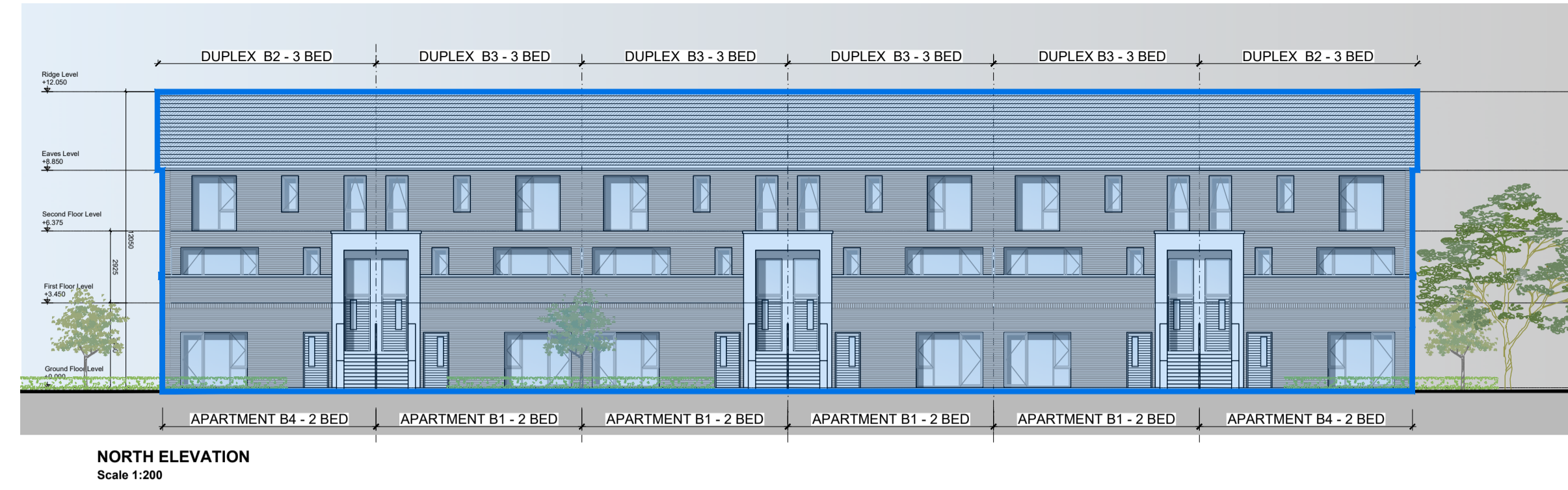


N.125 DUPLEX B2 FIRST FLOOR PLAN 1F Area = 59.3 m<sup>2</sup> (O/A Area 115.8 m<sup>2</sup>)  
 N.126 DUPLEX B3 FIRST FLOOR PLAN 1F Area = 58.0 m<sup>2</sup> (O/A Area 113.2 m<sup>2</sup>)  
 N.127 DUPLEX B3 FIRST FLOOR PLAN 1F Area = 58.0 m<sup>2</sup> (O/A Area 113.2 m<sup>2</sup>)  
 N.128 DUPLEX B3 FIRST FLOOR PLAN 1F Area = 58.0 m<sup>2</sup> (O/A Area 113.2 m<sup>2</sup>)  
 N.129 DUPLEX B3 FIRST FLOOR PLAN 1F Area = 58.0 m<sup>2</sup> (O/A Area 113.2 m<sup>2</sup>)  
 N.130 DUPLEX B2 FIRST FLOOR PLAN 1F Area = 59.3 m<sup>2</sup> (O/A Area 115.8 m<sup>2</sup>)

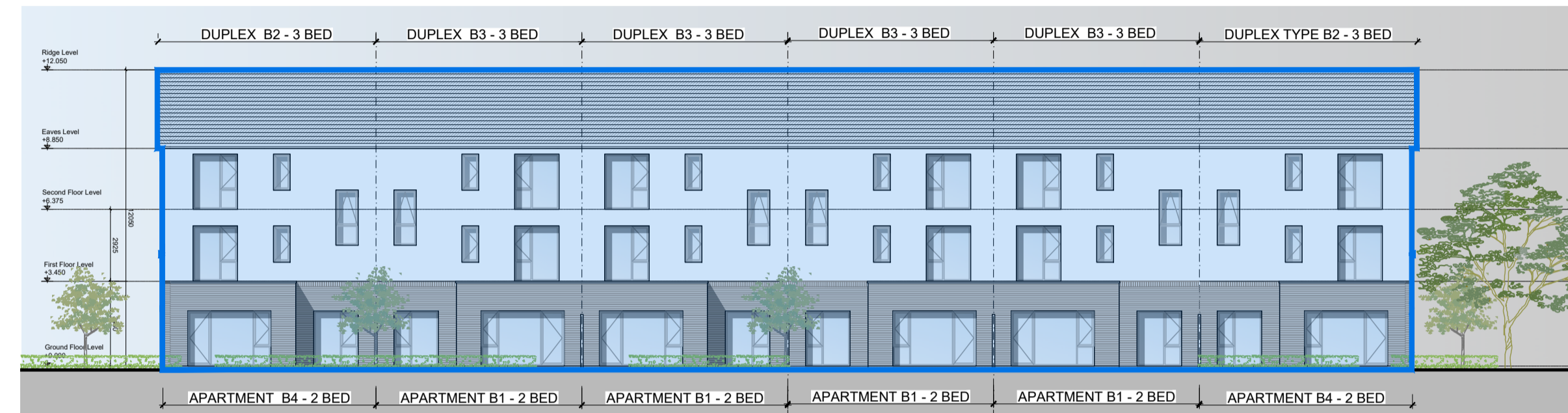


N.119 APARTMENT B4 GROUND FLOOR PLAN Area = 79.7 m<sup>2</sup>  
 N.120 APARTMENT B1 GROUND FLOOR PLAN Area = 80.0 m<sup>2</sup>  
 N.121 APARTMENT B1 GROUND FLOOR PLAN Area = 80.0 m<sup>2</sup>  
 N.122 APARTMENT B1 GROUND FLOOR PLAN Area = 80.0 m<sup>2</sup>  
 N.123 APARTMENT B1 GROUND FLOOR PLAN Area = 80.0 m<sup>2</sup>  
 N.124 APARTMENT B4 GROUND FLOOR PLAN Area = 79.7 m<sup>2</sup>

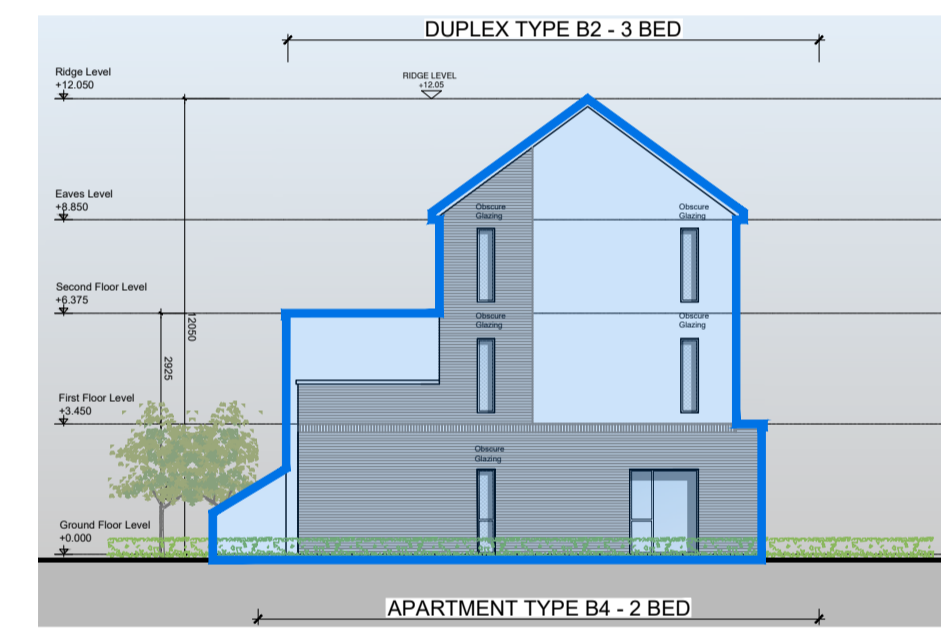
DUPLEX BLOCK K - GROUND, FIRST, SECOND FLOOR AND ATTIC PLAN SCALE 1:200



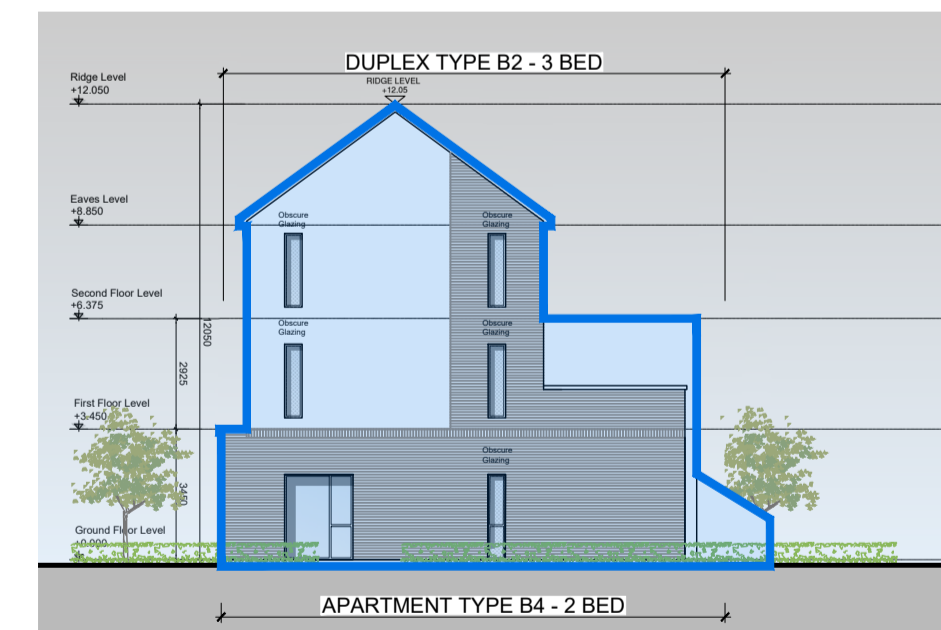
NORTH ELEVATION Scale 1:200



SOUTH ELEVATION Scale 1:200



WEST ELEVATION Scale 1:200

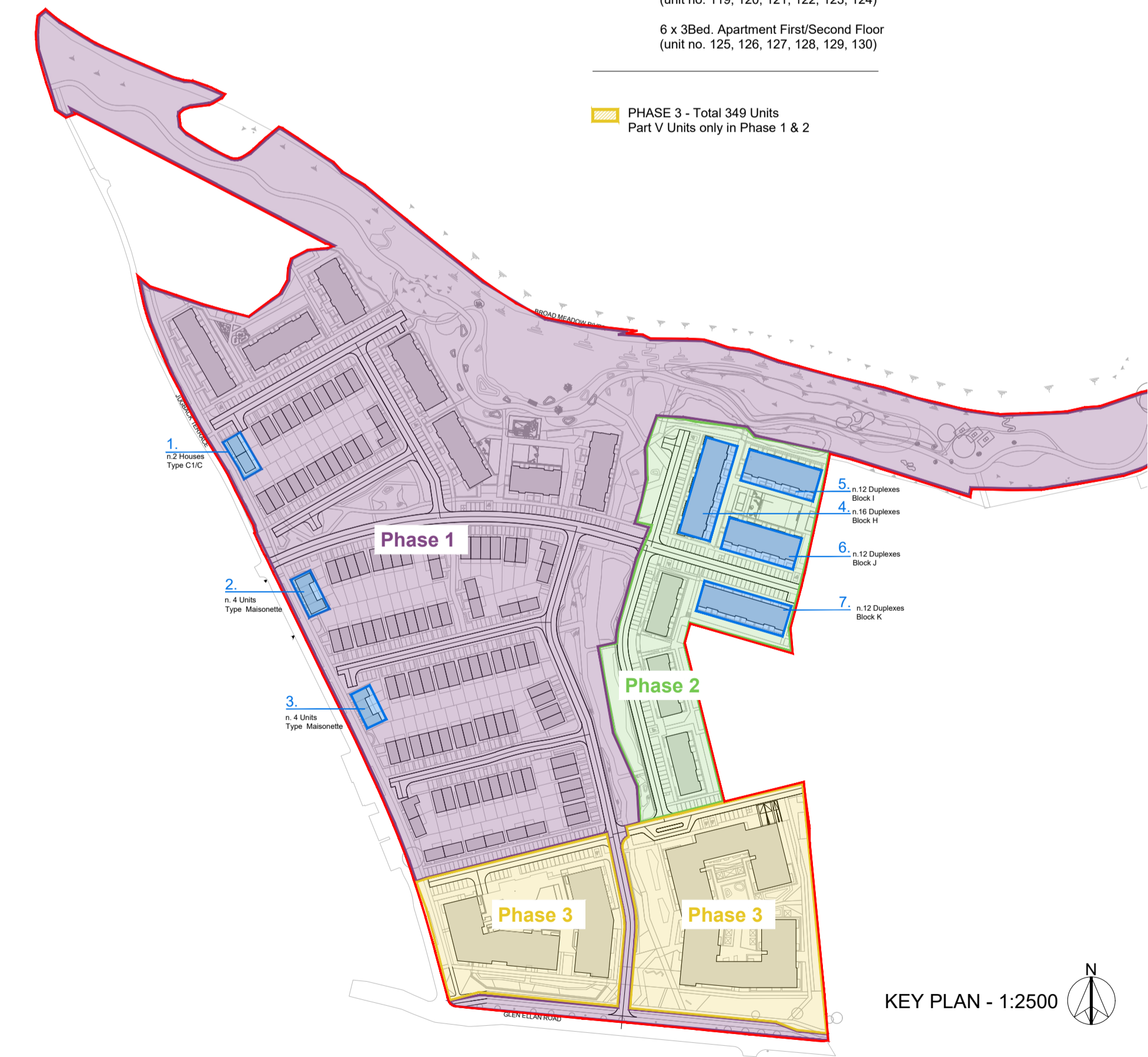


EAST ELEVATION Scale 1:200

GENERAL NOTES

THIS DRAWING TO BE READ IN CONJUNCTION WITH ARCHITECT'S DRAWINGS, CONSULTANT ENGINEER'S DRAWINGS AND SPECIFICATIONS, AND LANDSCAPE ARCHITECT'S DRAWINGS AND SPECIFICATIONS.

- Part V - Units Outlined in Blue
  - Phase 1 - 196 Units (n.10 for Part V)
  - Phase 2 - 76 Units (n.52 for Part V)
  - Phase 3 - 349 Units (no Part V units)
- Overall Development n.621 units  
 Min 10% requirement for Part V  
 n.62 Units Total provided
- |       |      |
|-------|------|
| 1 Bed | n.8  |
| 2 Bed | n.25 |
| 3 Bed | n.28 |
- 
- PHASE 1 - Total 196 Units (n.10 for Part V)
- HOUSES TYPE C1-C  
 2 x 3Bed. Houses (2 Storey)  
 (Unit no. 117 and 118)
- MAISONNETTE  
 8 x 1 Bed. Apartment  
 (Unit no. 53,54,55,56,90,91,92,93)
- 
- PHASE 2 - Total 76 Units (n.52 for Part V)
- DUPLEX BLOCK H  
 8 x 2Bed. Apartment Ground Floor  
 (unit no. 79, 80, 81, 82, 83, 84, 85, 86)  
 8 x 3Bed. Apartment First/Second Floor  
 (unit no. 87, 88, 89, 90, 91, 92, 93, 94)
- DUPLEX BLOCK I  
 6 x 2Bed. Apartment Ground Floor  
 (unit no. 95, 96, 97, 98, 99, 100)  
 6 x 3Bed. Apartment First/Second Floor  
 (unit no. 101, 102, 103, 104, 105, 106)
- DUPLEX BLOCK J  
 6 x 2Bed. Apartment Ground Floor  
 (unit no. 107, 108, 109, 110, 111, 112)  
 6 x 3Bed. Apartment First/Second Floor  
 (unit no. 113, 114, 115, 116, 117, 118)
- DUPLEX BLOCK K  
 6 x 2Bed. Apartment Ground Floor  
 (unit no. 119, 120, 121, 122, 123, 124)  
 6 x 3Bed. Apartment First/Second Floor  
 (unit no. 125, 126, 127, 128, 129, 130)
- 
- PHASE 3 - Total 349 Units  
 Part V Units only in Phase 1 & 2



KEY PLAN - 1:2500

NOTES:

DO NOT SCALE FROM DRAWINGS. WORK TO FIGURED DIMENSIONS ONLY. ARCHITECT TO BE NOTIFIED OF ALL DISCREPANCIES.

CLIENT:		REVISIONS	
 CAIRN Homes Properties Ltd		DATE	DESCRIPTION

PROJECT TITLE:		DATE:	DRAWN BY:
SHD AT HOLYBANKS, SWORDS		Mar'22	IDF
DRAWING TITLE:		SCALE:	REVISION:
Part V Provision		1:200@A1	
Phase 2 - Sheet 5 of 5		JOB NO:	DRAWING NO:
1 Grantham Street, Dublin 8, D08 A9P7, Ireland. Tel: 01-4787870 Fax: 01-4787811 E-Mail: ac@mcorm.com		19022	PL62